

# NWSLTR

NASHUA CENTER HAPPENINGS FROM DECEMBER TO FEBRUARY!



**Sipping Sweetness: LIFE-OP Celebrates National Hot Chocolate Day**

In the cozy comfort of our LIFE-OP program, we celebrated National Hot Chocolate Day with steaming mugs of rich and creamy hot chocolate.

**#WinterHighlights**

Embracing Seasonal Joy and Community Spirit

5

**Meet Justin:**

A Remarkable Person

08

**Faces of Nashua Center:**

Monthly Service Awards

10



# FROM THE EXECUTIVE DIRECTOR

Dear Nashua Center Community,

As winter starts to fade away, we're excited to share some of the special moments that have brought warmth and togetherness to our community here at Nashua Center. Whether it's decking the halls or spreading kindness, this winter has truly been one to remember. As we eagerly await the arrival of spring, let's hold onto the memories we've created and the connections we've built. Here's to more growth, friendship, and happiness in the days ahead.

And a big thank you to our donors and friends whose support keeps our mission alive. Your generosity means the world to us and brings hope to those we serve. Together, we're truly making a difference.

Don't forget to mark your calendars for our Taste of the Towns event on May 2nd! We can't wait to see you there for an evening filled with delicious food, great company, and plenty of fun. It's a fantastic opportunity to support our community while indulging in some culinary delights. We'll be there with open arms, ready to share laughter and good times with you. See you soon!

Warmly,

Emily K. Manire  
Executive Director



**AS WE TRANSITION INTO THE SPRING SEASON, WE FONDLY RECALL THE MEMORABLE MOMENTS AND ACHIEVEMENTS OF OUR WINTER AT NASHUA CENTER. IN THIS NEWSLETTER, WE REFLECT ON THE HIGHLIGHTS AND CAMARADERIE THAT MADE OUR WINTER SPECIAL. WE CARRY THESE MEMORIES WITH US AS WE EMBRACE THE FRESH START AND NEW POSSIBILITIES THAT SPRING BRINGS.**



**Celebrating Winter Grants:** **04**  
Nashua Center Receives Grants to Enhance Accessibility and Services

**#WinterHighlights** **05**  
Embracing Seasonal Joy and Community Spirit

**Spreading Joy:** **06**  
Nashua Center's Holiday Gift Initiative Brings Smiles to Many

**Taste of the Towns:** **07**  
Join Us



**Meet Justin:** **08**  
A Remarkable Person

**Faces of Nashua Center:** **10**  
Monthly Service Awards

**Our Guiding Principles** **12**

**Board of Directors**  
2023-2024

**OFFICERS**  
Beth Sheehan  
*President*

Erin Boucher  
*Vice President*

Duy Nguyen  
*Treasurer*

Allie Lafond, SHRM-CP  
*Secretary*

**DIRECTORS**  
Lorri Hayes  
Ron Hoy  
Taylor Loiselle, BCBA  
Tyler McAfee  
Jeff Moynihan  
Wes O'Bryan  
Donna Rosenstock  
Gabriele Zeira

## MISSION

**Nashua Center is committed to providing the highest quality of specialized care and support to each individual served while promoting growth in independence.**

# Celebrating Winter Grants: Nashua Center Receives Grants to Enhance Accessibility and Services

*EXPANDING FLEET AND OFFICE INFRASTRUCTURE THANKS TO GENEROUS FUNDING*



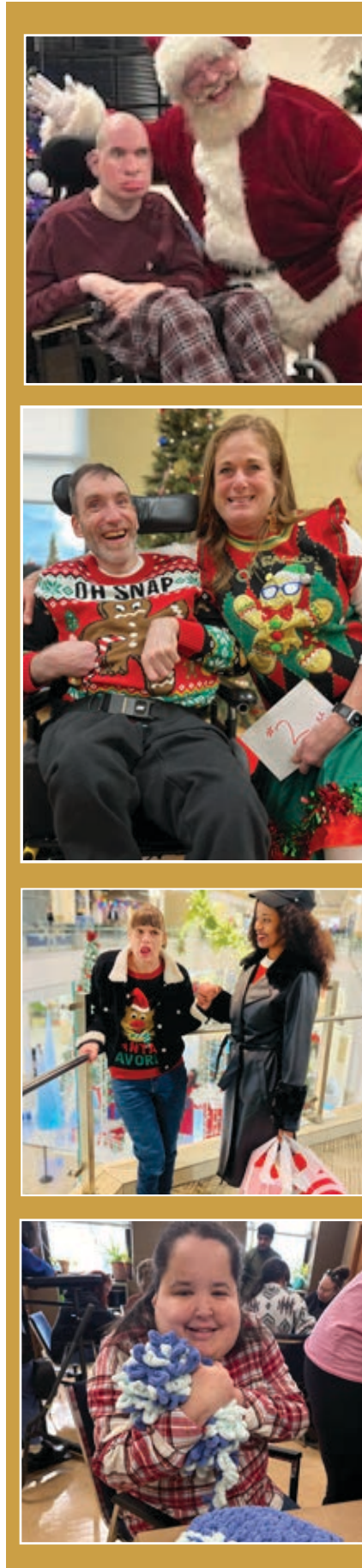
We are thrilled to share some exciting news with our Nashua Center community! Thanks to the generous support of various grants, we have been able to enhance our services and facilities in significant ways.

First, we are delighted to announce that as part of the Hillsborough County ARPA (American Rescue Plan Act) grant, we have received our third van, which will further facilitate our transportation services. This grant, awarded during the summer, has been instrumental in ensuring that our clients can access services with ease, and we eagerly anticipate the delivery of the fourth and final vehicle, which will complete this valuable fleet enhancement.

Additionally, we are grateful to the Samuel P. Hunt Foundation for their generous grant award of \$16,220.

This funding will be used to acquire HIPAA-compliant printers for our main office at 18 Simon St. and for The Children's Pyramid office at 12 Simon St. These printers are essential for ensuring the confidentiality and security of sensitive information, further enhancing our ability to serve our community with the utmost care and professionalism.

These grants exemplify the unwavering support and commitment of our community partners and benefactors, whose generosity continues to make a meaningful difference in the lives of those we serve. We extend our heartfelt thanks to Hillsborough County and the Samuel P. Hunt Foundation for their invaluable support and investment in Nashua Center's mission. Together, we are building a stronger, more inclusive community for all.



# #WinterHighlights Embracing Seasonal Joy and Community Spirit

As the winter season gradually comes to a close, we take a moment to reminisce on the heartwarming highlights that filled Nashua Center with warmth and cheer. From festive decorations adorning our homes to acts of kindness that touched hearts, here's a deeper dive into the memorable moments that made this winter special:

**Decking the Halls:** Our group home transformed into a winter wonderland, with residents and staff joining forces to decorate every nook and cranny with twinkling lights, festive wreaths, and cheerful decorations. The result was a joyous ambiance that filled our home with warmth and laughter.

**Family Holiday Mingle:** The air was filled with anticipation and excitement as we prepared for our special Family Holiday Mingle. Loved ones gathered to share in the festive spirit, enjoying delicious treats and heartfelt conversations. It was a time of togetherness and connection that created lasting memories for all.

**Holiday Shopping Excitement:** 'Tis the season for giving, and our clients embraced the spirit of generosity during our holiday shopping excursions. With smiles on their faces, they carefully selected gifts for their loved ones, spreading holiday cheer with each thoughtful purchase.

**Ugly Sweater Laughter and Smiles:** Laughter filled the air during our Ugly Sweater Day celebrations, as clients and staff embraced the opportunity to

don their most festive and outrageous attire. Congratulations to Nora and Shane, whose creative ensembles brought joy and laughter to all who crossed their paths. These moments of lighthearted fun served as reminders of the importance of laughter and silliness in brightening even the coldest of winter days.

**Acts of Kindness in Action:** In a heartwarming display of compassion, clients from our LIFE-OP program came together to spread warmth and joy. They crafted scarves for Marguerite's Place, a gesture that brought comfort and happiness to those in need.

**Cooking Joy:** Our clients whipped up nutritious sweet potato fries, turning the kitchen into a hub of laughter and learning. As they sliced and seasoned, they not only enjoyed delicious snacks but also bonded over shared experiences. These cooking adventures remind us that healthy eating is about more than just food—it's about fostering connections and creating moments of joy together.

**Celebrating Progress with Tech and Website Updates:** As we prepare to welcome the spring season, we're also celebrating the progress and growth that has taken place within our community. The launch of our newly updated website and the addition of new computers to The Children's Pyramid and LIFE-OP programs mark significant milestones in enhancing accessibility and communication. As we reflect on these advancements, we're filled with excitement and anticipation for the opportunities they will bring in the months and years ahead.

# Spreading Joy: Nashua Center's Holiday Gift Initiative Brings Smiles to Many

The holiday season at Nashua Center was filled with warmth and generosity, all thanks to the incredible support from our community. Our Holiday Gift Initiative brought joy to countless individuals, thanks to the generous contributions from local organizations and our dedicated staff.

We extend our heartfelt appreciation to Coca-Cola Northeast, Eastern Bank, Omron, St. Mary's Bank, Peter's of Nashua, and our hardworking team for their unwavering support. Their kindness ensured that every individual in our Adult Programs received a thoughtful gift, while also brightening the holidays for a special family in our Children's Pyramid program.

Beyond the tangible gifts, these donations brought a sense of joy and camaraderie to our Nashua Center family. The holiday season was truly a time of togetherness and community, made possible by the kindness of those who rallied behind our cause.

As we embrace the new year, we carry with us the spirit of gratitude and compassion that defined the holiday season. We are immensely grateful to our community for their generosity, which has made a meaningful impact on the lives of those we serve.

Thank you for spreading cheer and making the holidays brighter for everyone at Nashua Center. Your support is a testament to the power of community, and we look forward to continuing to make a positive difference together.



# Honorees



**LATHA MANGIPUDI**  
Inclusivity Champion Award



**JIM PIET**  
Mission Champion Award



**DANIELLE POIRIER**  
Trailblazer Award



Get ready for an evening that will tantalize your taste buds and warm your heart: Taste of the Towns is here, and you're invited to experience a night of flavor, fun, and compassion like no other.

But there's more to this event than just great food and great drinks. You see, the individuals served by Nashua Center face challenges that most of us can't even imagine. From navigating daily tasks to overcoming societal barriers, they often encounter obstacles that hinder their ability to live full and independent lives.

That's where you come in.

By attending Taste of the Towns and supporting Nashua Center, you're not just enjoying a culinary experience; you're becoming a vital part of the solution. Your generosity helps fund essential programs and services that empower individuals with disabilities to overcome these challenges and embrace their potential.

Imagine the impact of providing educational resources, vocational training, and community support to those who need it most. Your contribution, whether it's purchasing tickets, sponsorship, or sharing a celebratory message in our journal, directly addresses the problem and brings hope for those we serve.

So come, join us at Taste of the Towns, and indulge in the warmth of community, the joy of giving, and the satisfaction of knowing that you're making a real difference in the lives of others—all while enjoying great food, great drinks, and supporting a truly great cause.

**JOIN US - VISIT [NASHUACENTER.ORG](http://NASHUACENTER.ORG) FOR MORE INFORMATION**



**REHABILITATION EQUIPMENT ASSOCIATES**

Accepting: Jan Soderquist  
Corporate Ally Award

# Meet Justin: A Remarkable Person

Meet Justin, a vibrant member of our Nashua Center family, whose journey reflects the transformative power of the LIFE-OP program. Justin is a shining example of the remarkable individuals who are the heart and soul of Nashua Center's community, inspiring others to embrace their unique talents, pursue their passions, and make a difference in the world.

For Justin, LIFE-OP is more than a program; it's a gateway to endless possibilities. Through various activities and vocational opportunities, LIFE-OP empowers Justin to explore his interests, develop essential life skills, and build meaningful connections with his peers.

At the core of Justin's being is his love for cooking. Whether he's whipping up a batch of his famous buffalo dip or crafting homemade pizzas with his mom, Justin finds joy in the creative process of culinary arts. His eyes light up when he talks about experimenting with recipes and sharing his delicious creations with loved ones. Cooking isn't just a hobby for Justin; it's a form of self-expression and a way to spread happiness to those around him.

Beyond the kitchen, Justin is a compassionate soul with a heart of gold. His dedication to volunteering with Meals on Wheels speaks volumes about his kindness and empathy. Justin's genuine desire to make a difference in the lives of others shines through in every meal he delivers and every smile he brings to someone's face. For Justin, giving back isn't just an obligation; it's a calling—a way to

spread love and positivity in the world.

Justin's infectious enthusiasm extends to his love for learning and exploring new interests. Whether he's delving into research projects about China or indulging in his passion for Marvel movies and anime, Justin approaches life with a sense of curiosity and wonder. His thirst for knowledge is boundless, and he eagerly embraces every opportunity to broaden his horizons and expand his understanding of the world.

In addition to his love for cooking and community service, Justin has a passion for entrepreneurship. He dreams of starting a pet sitting business and currently practices by walking dogs for friends and family. His entrepreneurial spirit drives him to explore new opportunities and pursue his goals with determination and enthusiasm.

Amidst his busy schedule, meditation offers Justin moments of peace and reflection, allowing him to recharge and navigate life's challenges with clarity and focus. Justin's commitment to holistic well-being extends to his lifestyle choices, including maintaining a healthy diet and staying active.

Justin's journey at Nashua Center is enriched by its collaboration with Nashua Community College, offering him the opportunity to experience college life to the fullest. Through this partnership, Justin gains access to a wealth of resources and opportunities, including the campus track, fitness center, and classroom space. He utilizes these facilities to further his

personal and academic growth, demonstrating his dedication to lifelong learning and self-improvement.

But perhaps what truly sets Justin apart is his genuine warmth and ability to connect with others. He's not just a client at Nashua Center; he's a friend, a confidant, and a source of inspiration for those fortunate enough to know him. Justin's infectious laughter, genuine kindness, and unwavering positivity brighten the lives of everyone he encounters, leaving a lasting impression wherever he goes.

In Justin, we find a remarkable individual whose vibrant personality, unwavering compassion, and boundless enthusiasm make him a true asset to the Nashua Center family. His journey is a testament to the power of kindness, resilience, and the transformative impact of embracing life with an open heart and a generous spirit. Justin isn't just Our Remarkable Person; he's a symbol of warmth and love in a world that needs it most.



**VOLUNTEERING AND DELIVERING SMILES!**

## EMPOWER CHANGE, TRANSFORM LIVES

We invite you to be a part of our journey toward creating a more inclusive world. Your valuable support enables us to sustain life-changing programs and services that empower individuals to reach their full potential.

### Why Your Support Matters:

**Life-Changing Programs:** Your generosity enables us to offer a diverse range of programs tailored to the unique needs of our participants. From skill development to therapeutic activities, each program is designed to foster growth, independence, and a sense of achievement.

**Empowerment and Inclusion:** Your contributions help us create an environment where individuals of all abilities feel valued, supported, and included. Together, we're breaking down barriers and fostering a sense of belonging that has a lasting impact on our participants' lives.

**Community Engagement:** Through our events and initiatives, we're bridging the gap between our participants and the broader community. Your support encourages positive interactions, mutual understanding, and lasting friendships that transcend boundaries.

**Join us today and help us empower change, transform lives, and build a brighter future. Your donation is a direct step toward making a meaningful difference.**

Visit [NASHUACENTER.ORG](https://NASHUACENTER.ORG) to make a lasting gift.



SCAN TO DONATE

## Faces of Nashua Center:



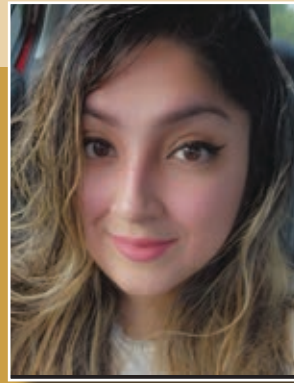
### December

Alice Uwimana

Meet Alice Uwimana, a dedicated member of our Residential Program and the well-deserved recipient of our Monthly Service Award for December. Since teaming up with Beth in May 2019, Alice's exceptional patience and composed demeanor have sparked transformative changes, guiding Beth through challenging moments and turning them into rare occurrences. Their inspiring journey, from apartment living to a beautiful home, showcases Alice's unwavering commitment and compassion.

Beyond daily interactions, Alice's advocacy for Beth extends boldly, ensuring her needs are prioritized. Their shared activities, from shopping to family outings, illustrate a holistic approach to care. Alice goes above and beyond, seamlessly integrating Beth into her own family circle, creating a warm and inclusive space. Thanks to Alice's efforts, Beth now enjoys family gatherings comfortably, surrounded by warmth and familiarity.

Alice exemplifies dedication, empathy, and inclusivity, creating an environment where Beth not only thrives but also feels embraced as an integral part of an extended family. As a provider in our Residential Program and a Monthly Service Award recipient, Alice's impact goes beyond conventional care, fostering a sense of belonging and security, making each day a journey of growth and companionship for Beth, staying true to Nashua Center's mission.



### January

Elly Fernandez

We are delighted to announce Elly Fernandez as the recipient of our Monthly Service Award for January! Elly has been an invaluable member of our Nashua Center team for over a year and a half, and her outstanding contributions have earned her this well-deserved recognition.

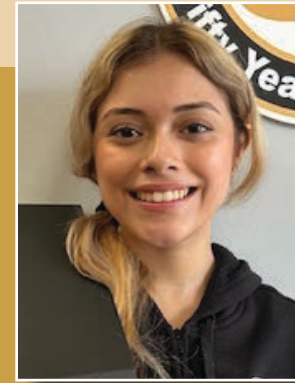
Elly stands out for her unwavering dedication, embodying patience, kindness, and genuine care in her role. Her approach reflects the perfect personality for the job, consistently treating everyone with dignity and respect.

Beyond her compassionate approach, Elly demonstrates an exceptional work ethic. Her meticulous and punctual completion of paperwork reflects her commitment to excellence. In handling challenges, she follows the proper chain of command, ensuring efficient and effective resolutions.

Elly's impact extends to empowering her clients, fostering their independence, and maintaining a positive outlook. She navigates redirection discreetly, prioritizing the well-being of those under her care.

As a hardworking team member, Elly always goes the extra mile, earning praise for her flexibility and willingness to take on additional shifts when needed. Her ability to connect with everyone around her makes her an invaluable asset to Nashua Center.

Congratulations to Elly Fernandez for earning the Monthly Service Award! Your dedication, positive influence, and exceptional service make you a standout member of the Faces of Nashua Center!



### February

Katrina Monjes

We are delighted to announce Katrina Monjes as the recipient of February's Service Award at Nashua Center. Despite her relatively short tenure with us, Katrina has already made a significant impact within the LIFE-OP program and our community, embodying the values we hold high.

Katrina's dedication to the well-being of our clients is truly exceptional. She consistently goes above and beyond to ensure each individual feels valued, respected, and engaged in meaningful activities, fostering a positive and inclusive environment.

One of Katrina's standout contributions is her leadership in facilitating LIFE-OP's weekly craft class. Through her creativity, organization, and passion for teaching, she has transformed this activity into a cherished experience for our clients, sparking joy and camaraderie with each session.

Additionally, Katrina's genuine compassion shines through in her interactions with our clients. She has a remarkable ability to connect on a personal level, tailoring her approach to meet each individual's unique needs with empathy and professionalism.

Beyond her direct responsibilities, Katrina's positive attitude and willingness to support her colleagues have made her a valued member of our team. Her collaborative spirit and dedication to our mission inspire us all to strive for excellence.

In recognition of her outstanding contributions and unwavering commitment, we proudly present Katrina with this month's Service Award. Her passion,

kindness, and exemplary service embody the spirit of Nashua Center and the LIFE-OP program, and we are grateful to have her as part of our team.

Congratulations, Katrina, on this well-deserved recognition!



Nashua Center  
18 Simon Street  
Nashua, NH 03060

Ph: (603)883-6163 | Fax: (603)881-7198 | [www.nashuacenter.org](http://www.nashuacenter.org)

## **Our History :**

Established in 1973, Nashua Center has been at the forefront of providing crucial support and care to children facing severe disabilities. With a formal incorporation as Nashua Center for the Multiply Handicapped, Inc.

In 1976, our organization has grown exponentially. Over the years our comprehensive services extend to a diverse population, encompassing hundreds of children from birth to age 3 annually, as well as over 80 adults with disabilities or acquired brain disorders. Today, we have become a trusted and relied-upon resource within our community, offering a wide range of specialized services tailored to individuals of all abilities. Our commitment to making a positive impact in the lives of those we serve remains unwavering.

## **Our Guiding Principles:**

Nashua Center is dedicated to delivering specialized care and support to individuals of all ages, guided by the following principles:

**Creating Safe and Nurturing Environments:** We prioritize finding and providing secure and compassionate living spaces where individuals can thrive.

**Fostering Meaningful and Fulfilling Experiences:** We strive to develop and encourage daily activities and opportunities that bring purpose and fulfillment to individuals' lives.

**Cultivating Social Interaction and Relationships:** We initiate and promote opportunities for social engagement and the development of meaningful relationships, fostering a sense of belonging and community.

**Empowering Independence through Skill Development:** We are committed to teaching practical skills that enhance individuals' independence, enabling them to lead more self-reliant lives.

**Advocating for Understanding and Inclusion:** We actively educate community members, employers, and organizations about the unique differences and needs of the individuals we serve, fostering an environment of acceptance and appreciation for diversity.

Our dedicated workforce is trained to embody and promote these principles, and our success is measured by our daily efforts. Active involvement in people's lives is at the core of our mission, and we approach this responsibility with utmost dedication and seriousness.